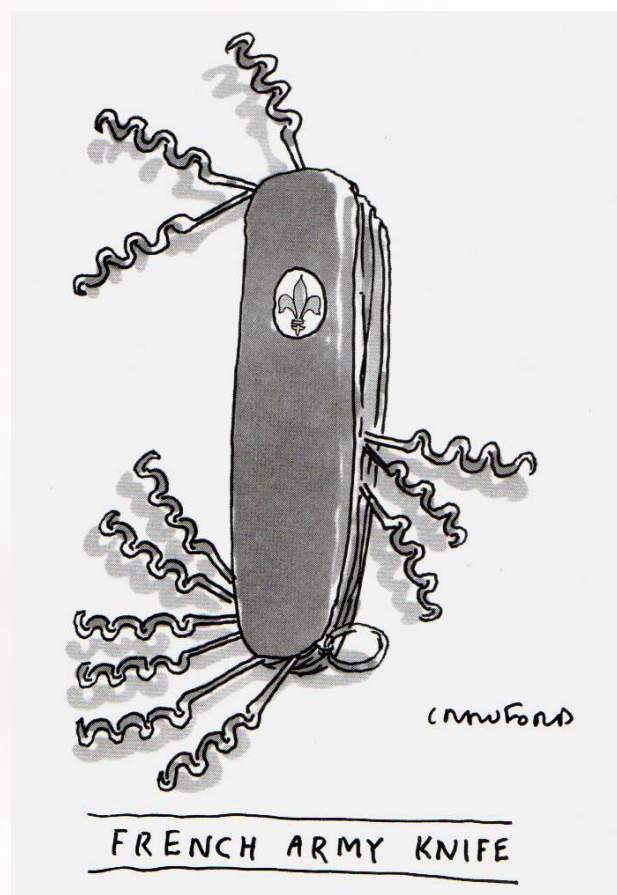


Coste-efectividad de la tecnología médica: reto para la sostenibilidad del sistema de salud



Enrique Bernal
ebernal.iacs@aragon.es
www.atlasvpm.org

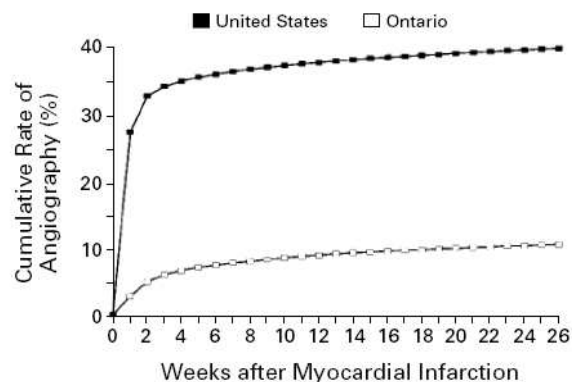


Figure 1. Cumulative Rates of Coronary Angiography after Acute Myocardial Infarction among Elderly Patients in the United States and Ontario, 1991.

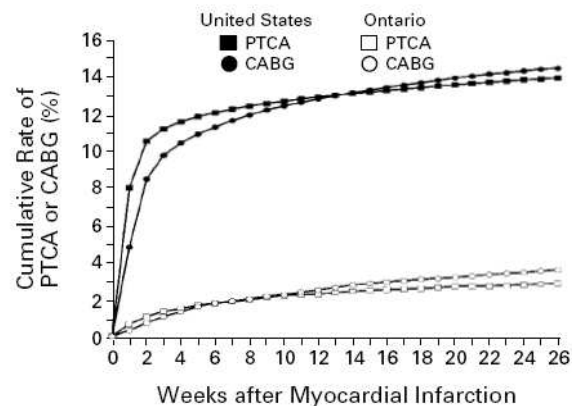


Figure 2. Cumulative Rates of Percutaneous Transluminal Coronary Angioplasty (PTCA) and Coronary-Artery Bypass Grafting (CABG) after Acute Myocardial Infarction among Elderly Patients in the United States and Ontario, 1991.

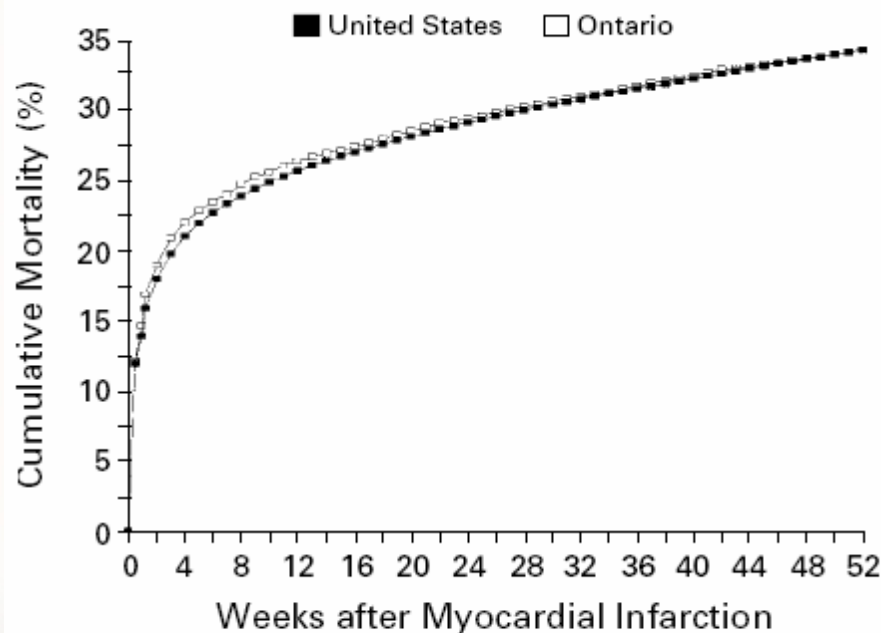
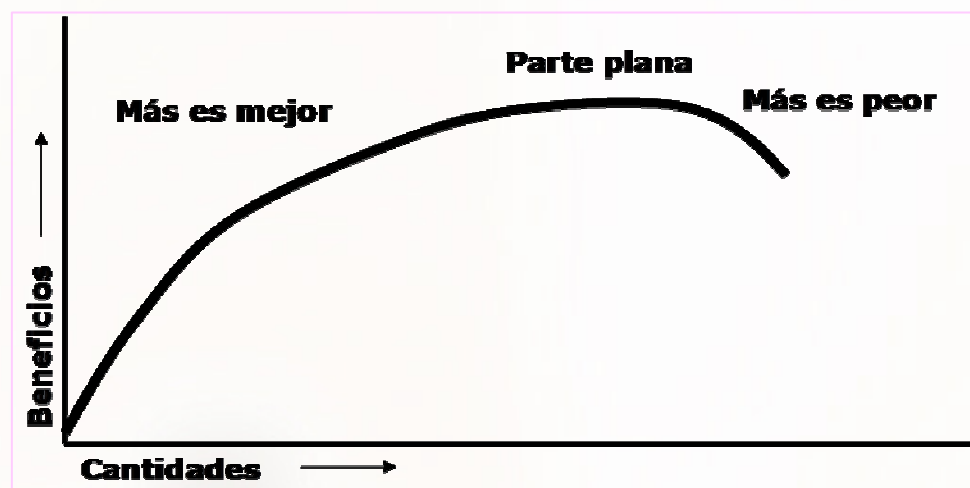


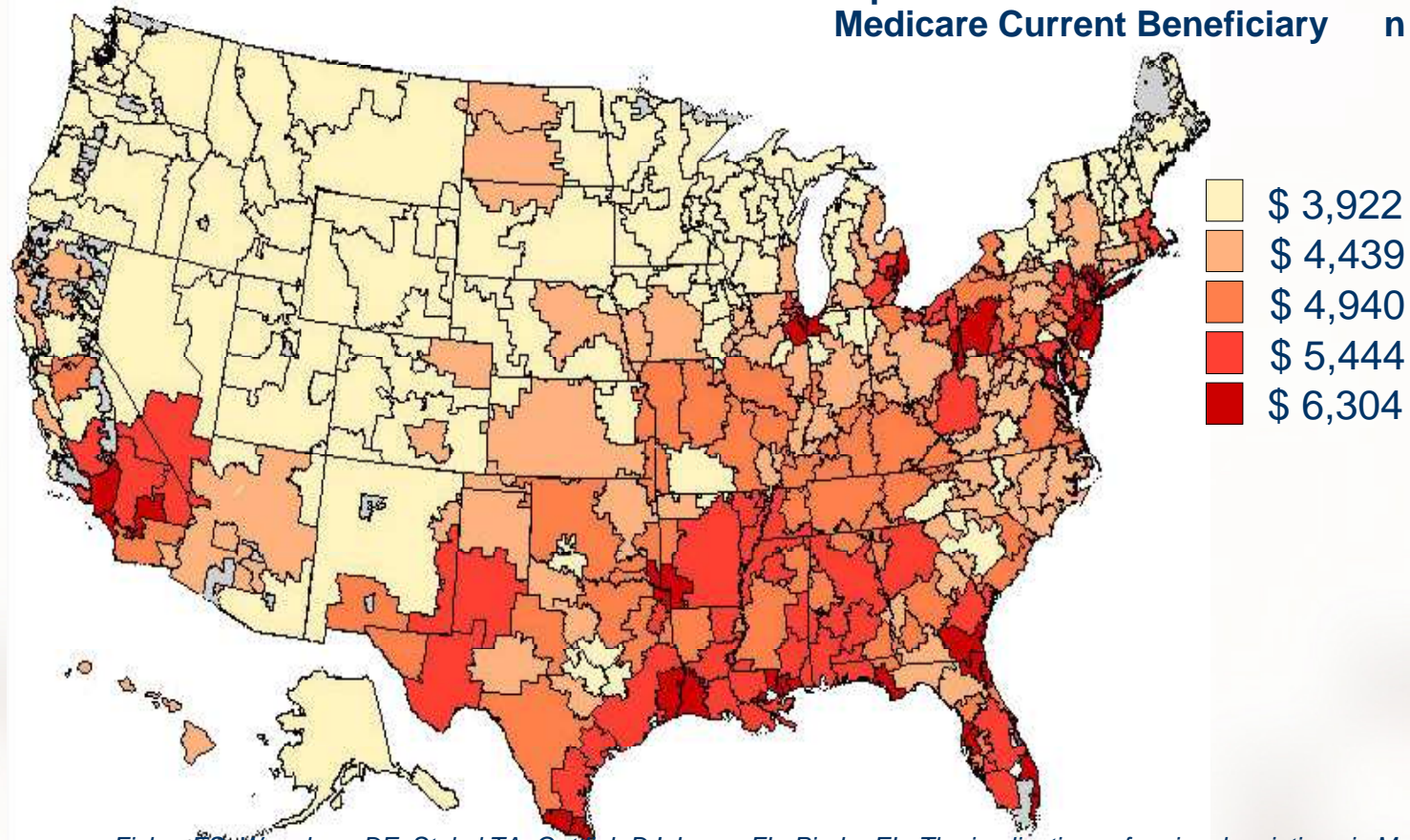
Figure 3. Cumulative Mortality after Acute Myocardial Infarction among Elderly Patients in the United States and Ontario, 1991.

N Engl J Med 1997;336:1500-5



**Más no siempre es mejor...
y es más ineficiente en el sentido asignativo**

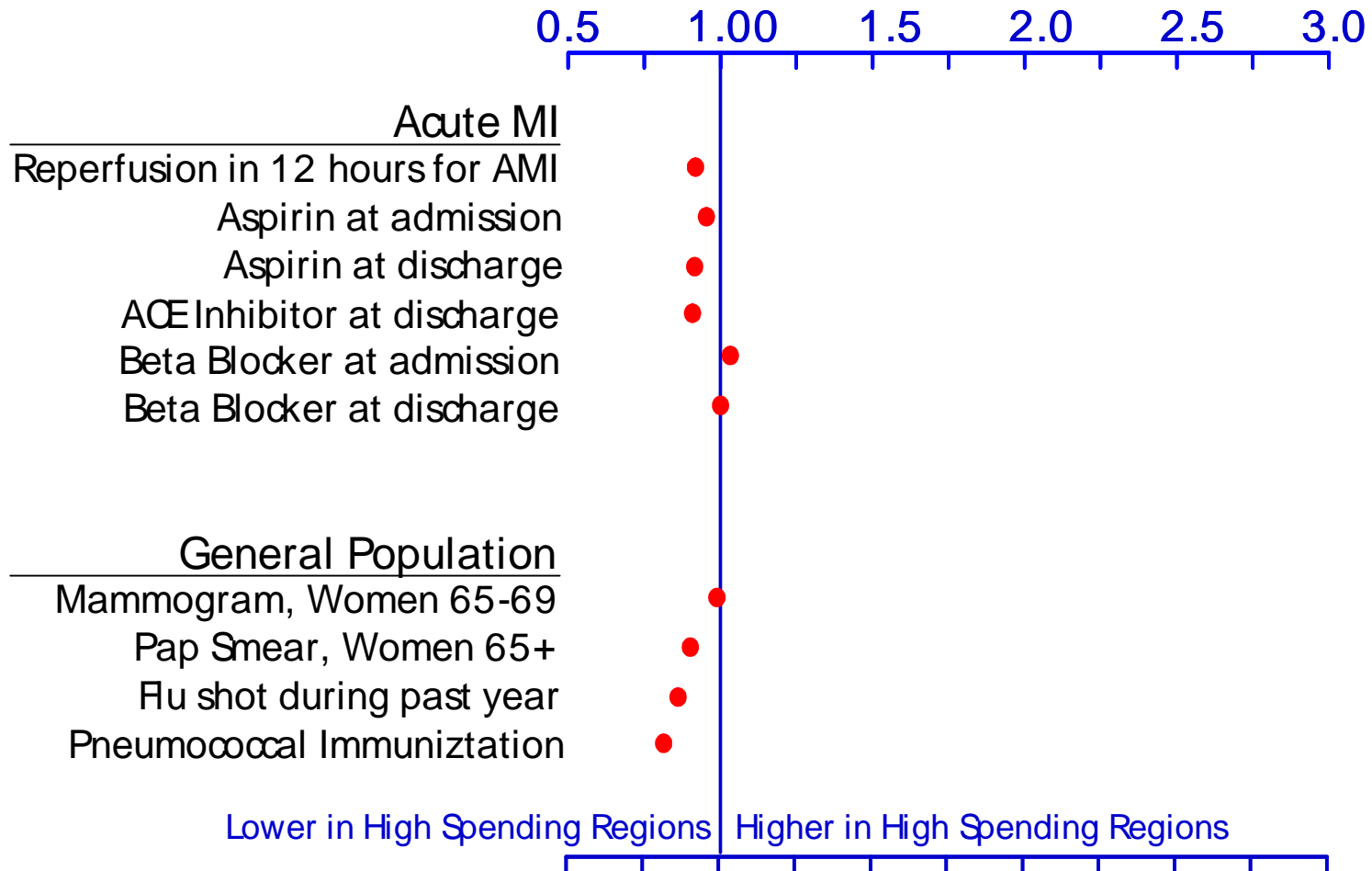
Acute myocardial infarction n = 159,393
Colorectal Cancer n = 195,429
Hip Fracture n = 614,503
Medicare Current Beneficiary n = 18,190



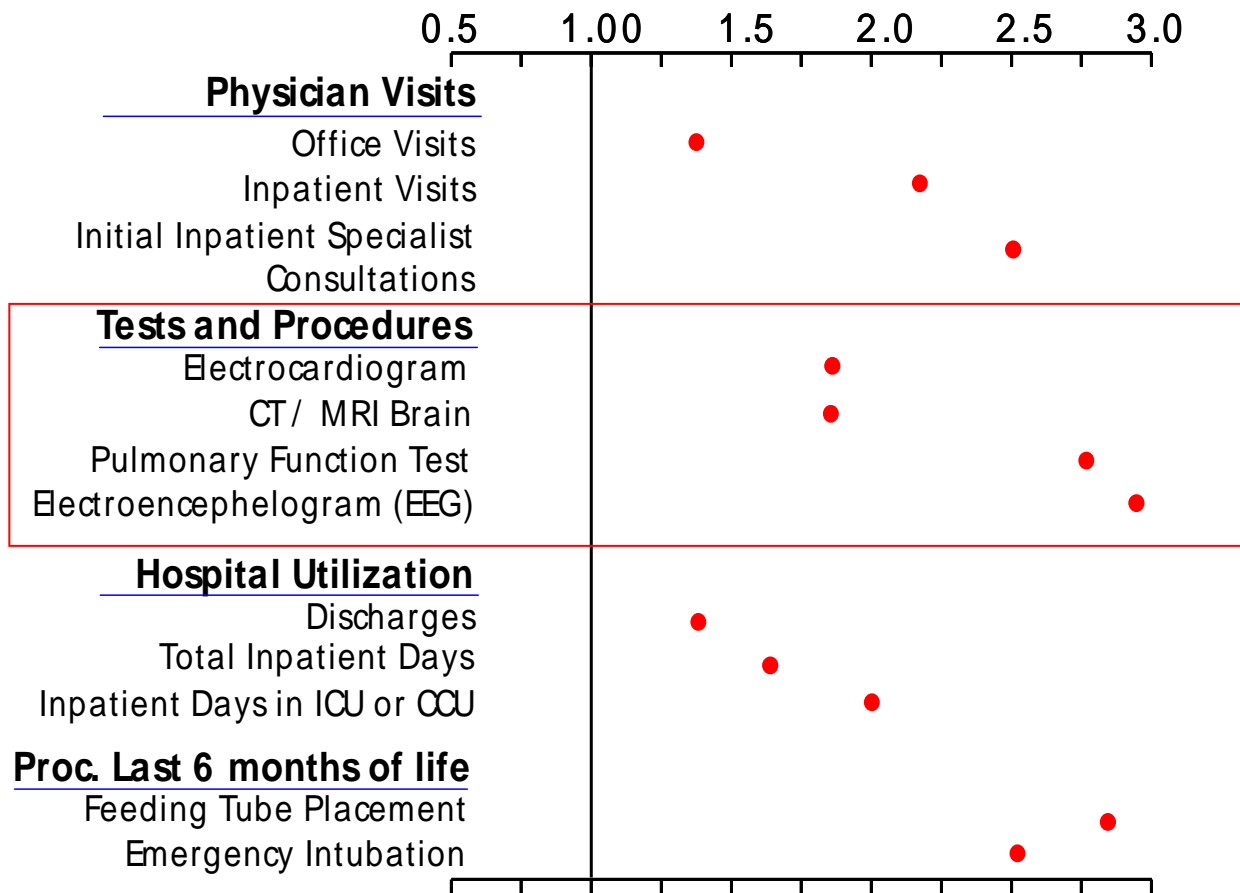
Fisher ES, Wennberg DE, Stukel TA, Gottlieb DJ, Lucas FL, Pinder EL. The implications of regional variations in Medicare spending. Part 2: health outcomes and satisfaction with care. *Ann Intern Med.* 2003;138:288-98.

Fisher ES, Wennberg DE, Stukel TA, Gottlieb DJ, Lucas FL, Pinder EL. The implications of regional variations in Medicare spending. Part 1: the content, quality, and accessibility of care. *Ann Intern Med.* 2003;138(4):273-87.

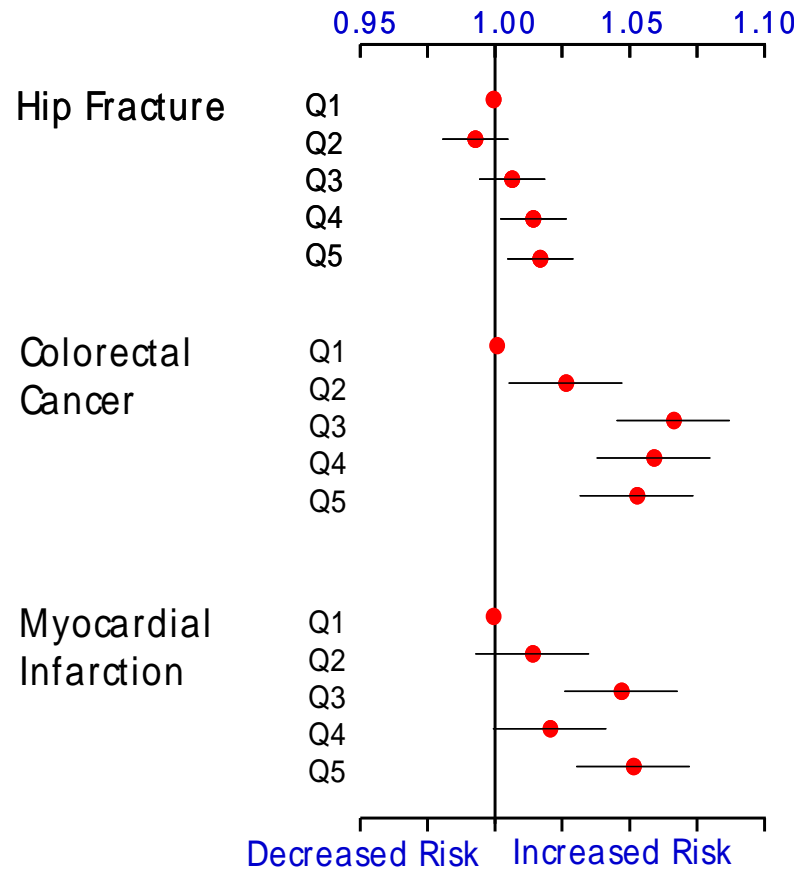
Effective Care: Ratio of Rates in Highest vs Lowest Spending Regions



Supply-Sensitive Care: Highest vs Lowest Spending Regions

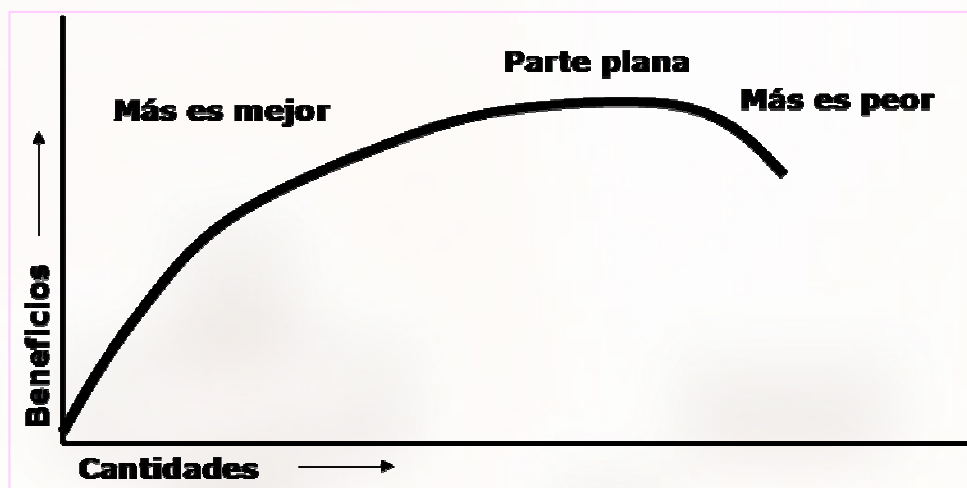


Relative Risk of Death across Quintiles of Spending

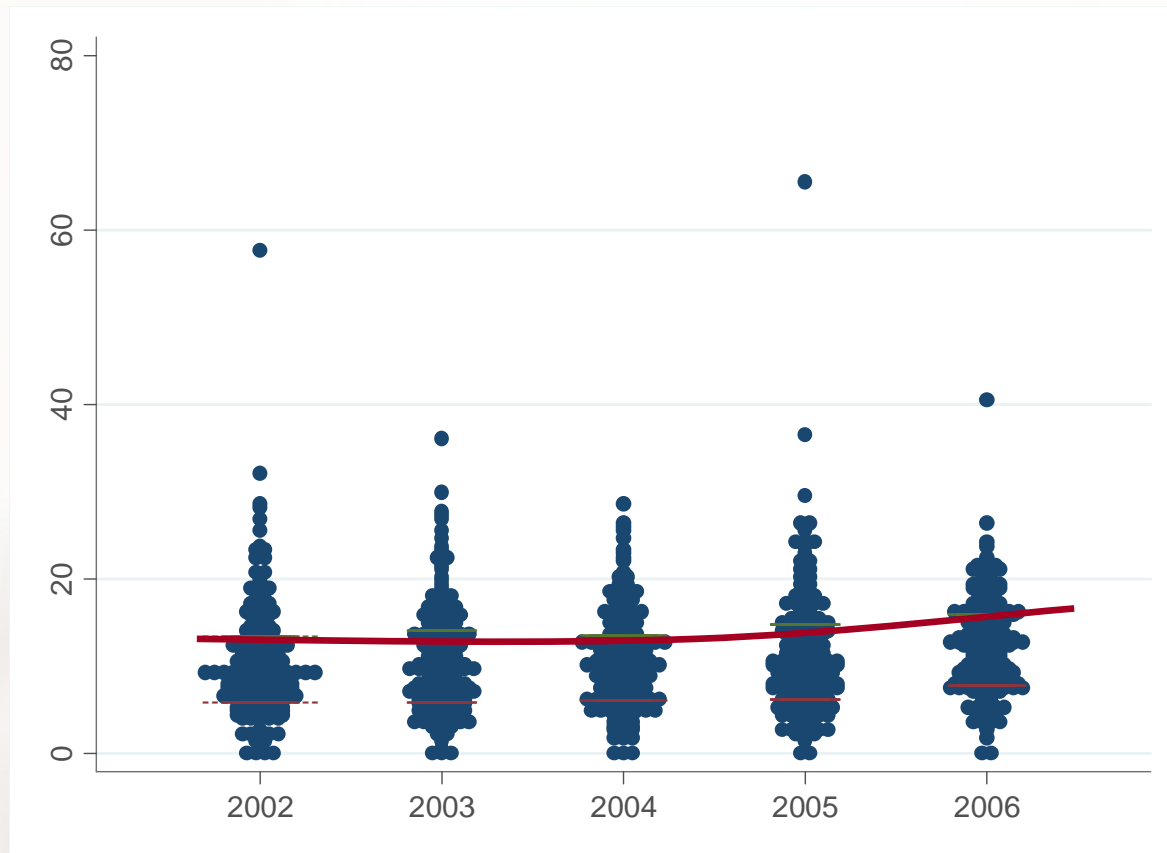
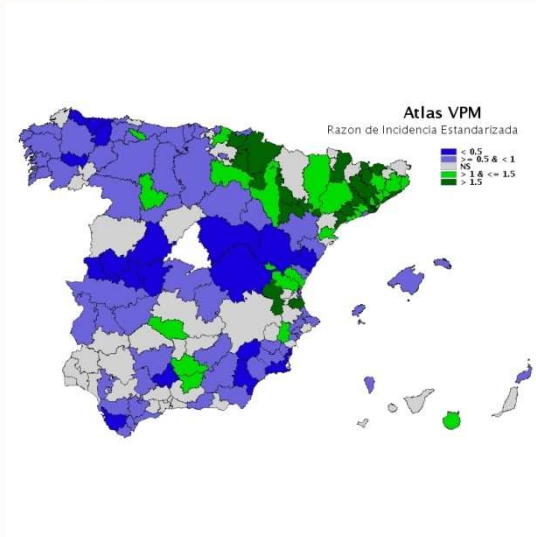


Fisher ES, Wennberg DE, Stukel TA, Gottlieb DJ, Lucas FL, Pinder EL. The implications of regional variations in Medicare spending. Part 2: health outcomes and satisfaction with care. *Ann Intern Med.* 2003;138:288-98.

Ejemplos de potencial ineficiencia asignativa en el caso español



Mastectomía conservadora en cáncer de mama



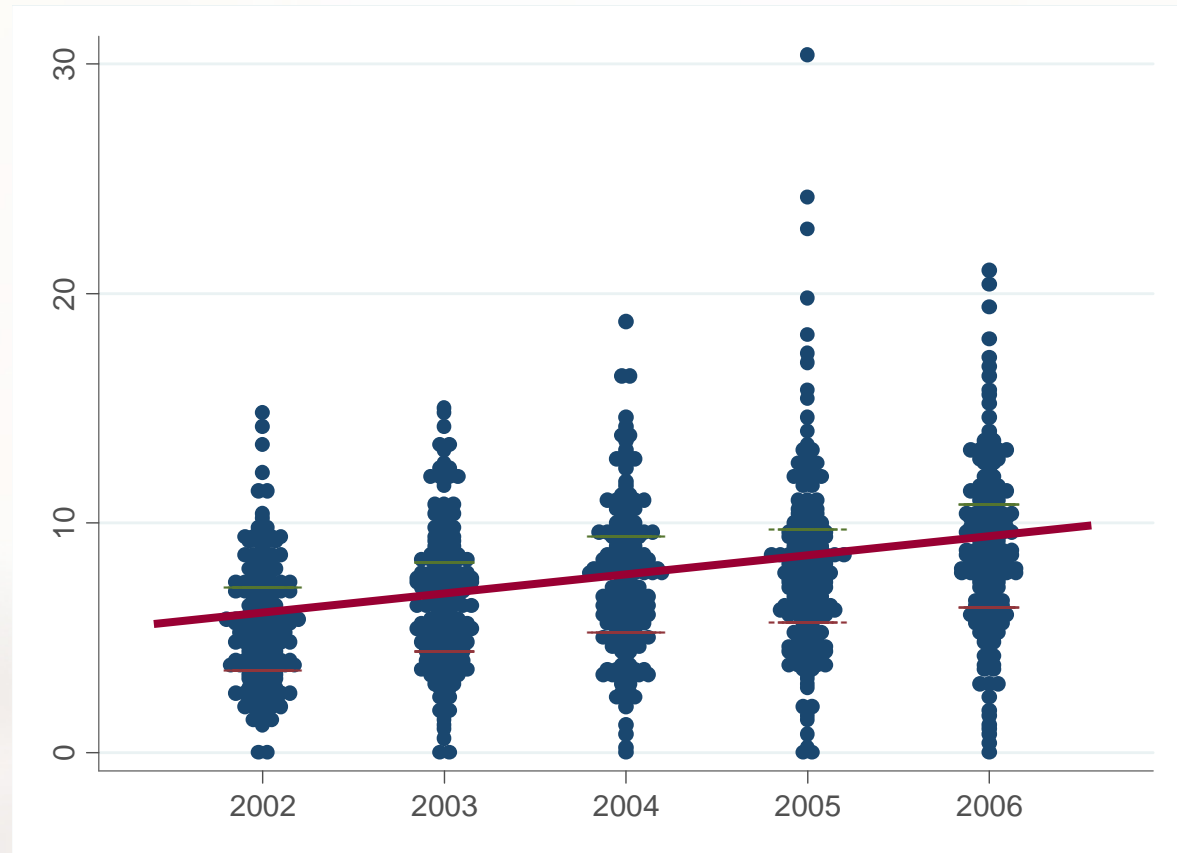
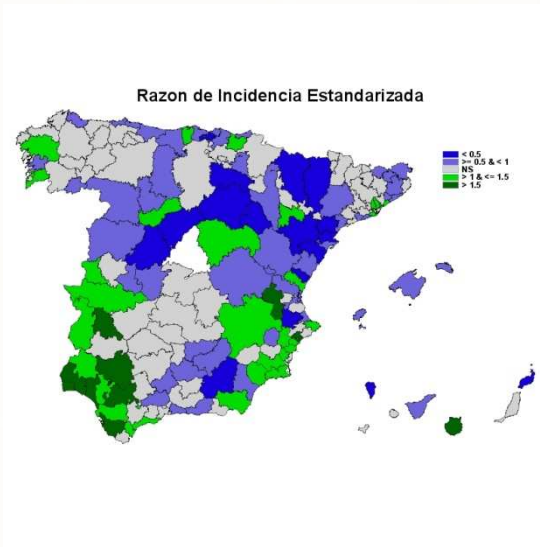
RV 5-95

12,33 7,12 8,12 9,15 5,44

EB

0,25 0,24 0,19 0,25 0,14

Angioplastia con stent



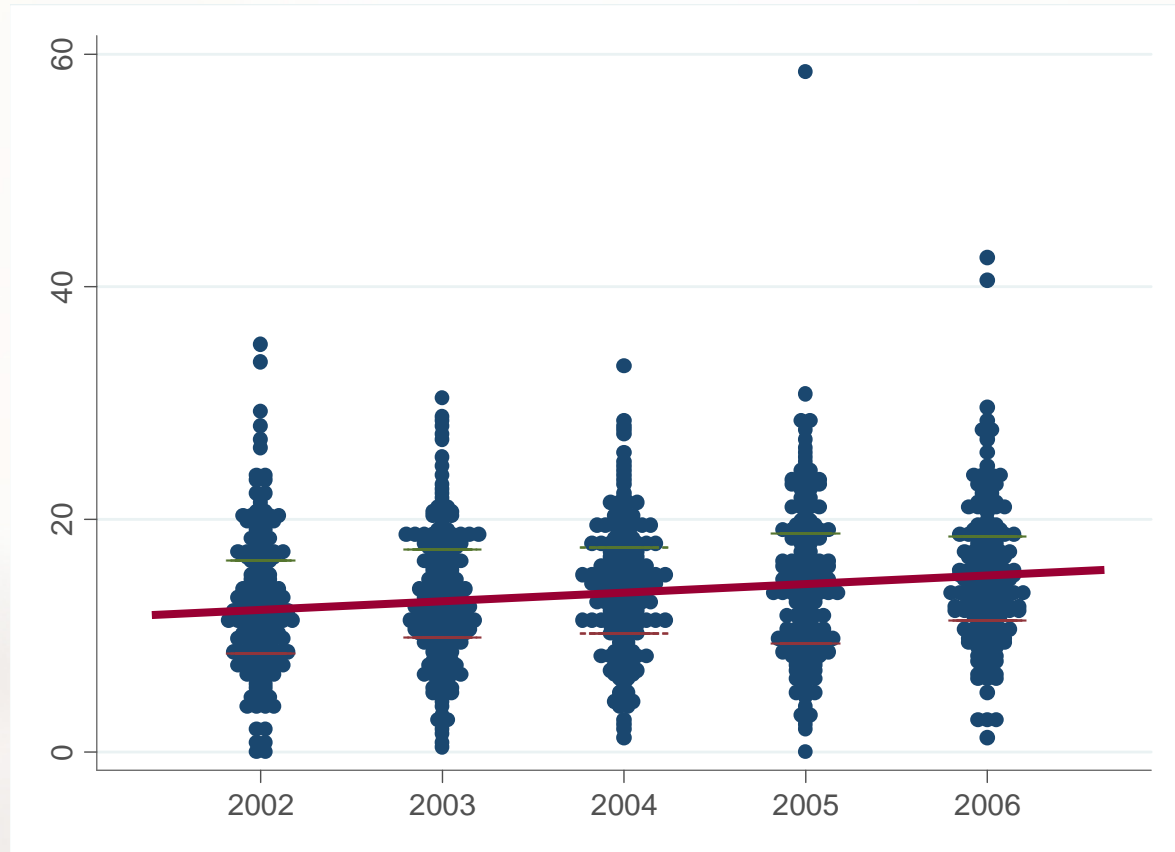
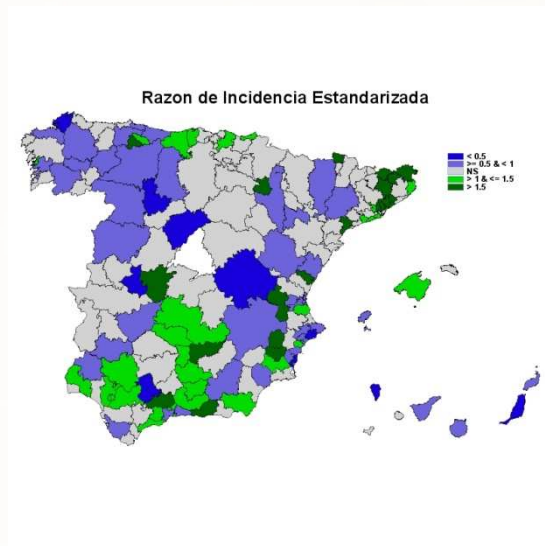
RV 5-95

5,5 5,4 4,9 5,0 5,1

EB

0,32 0,31 0,3 0,3 0,34

Colecistectomía laparoscópica



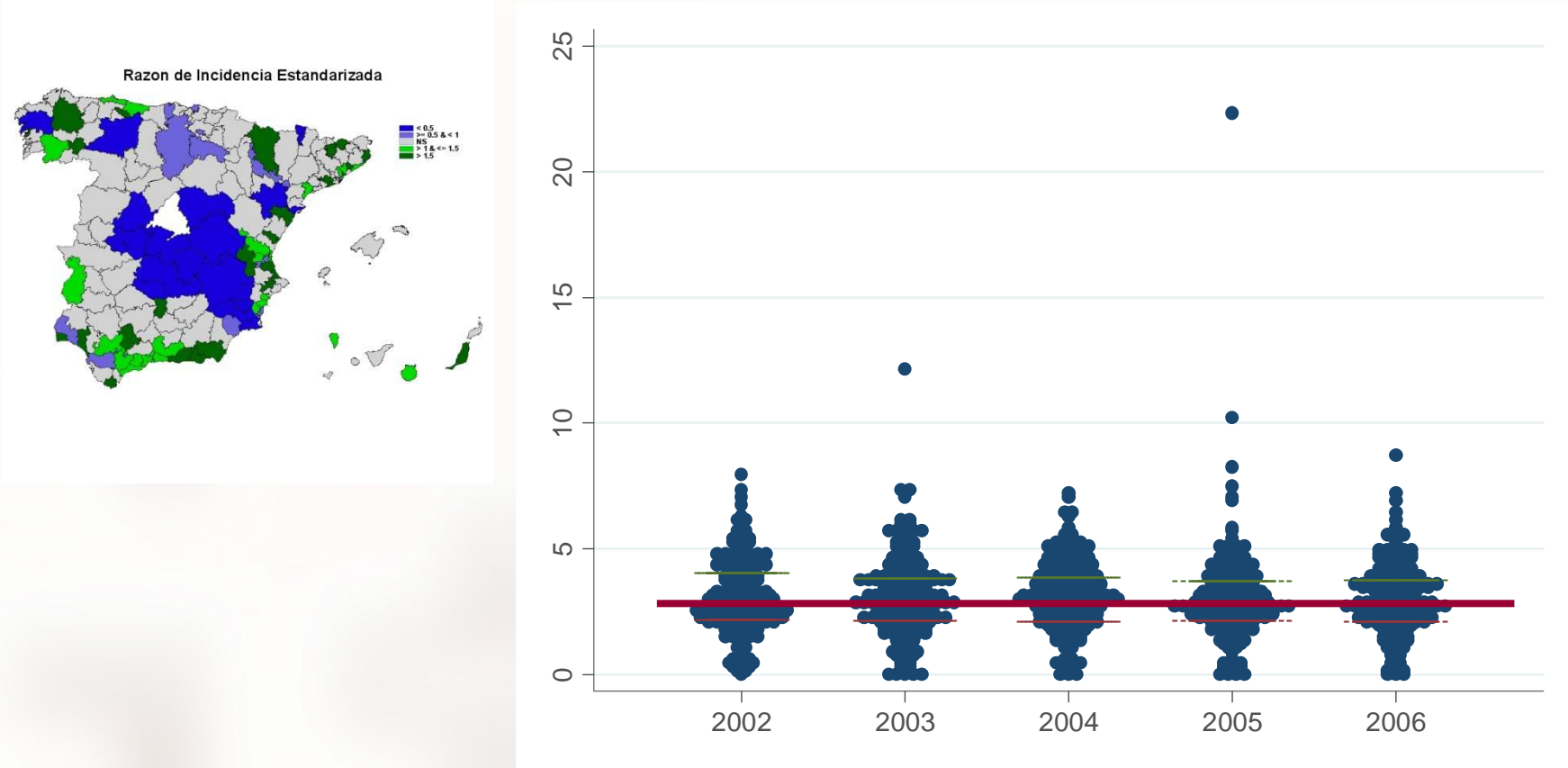
RV 5-95

5,67 4,76 5,02 4,98 3,69

CSV

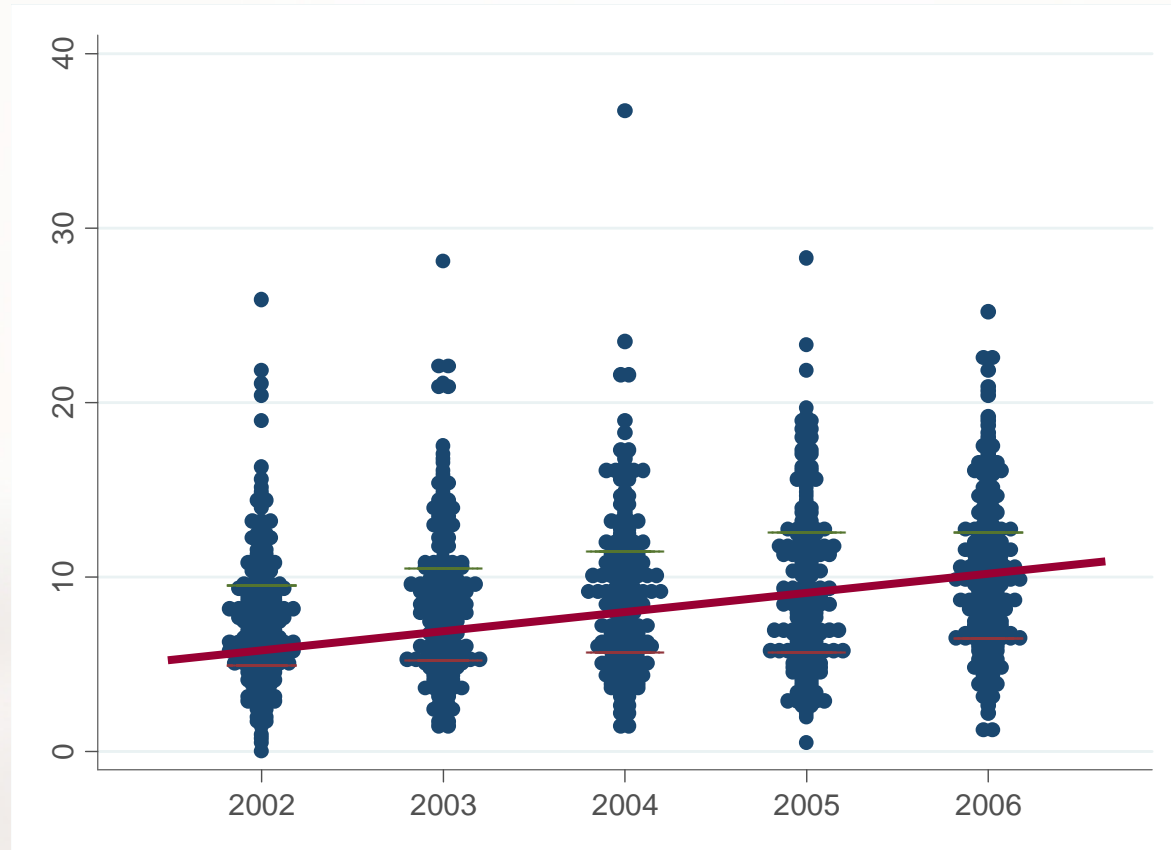
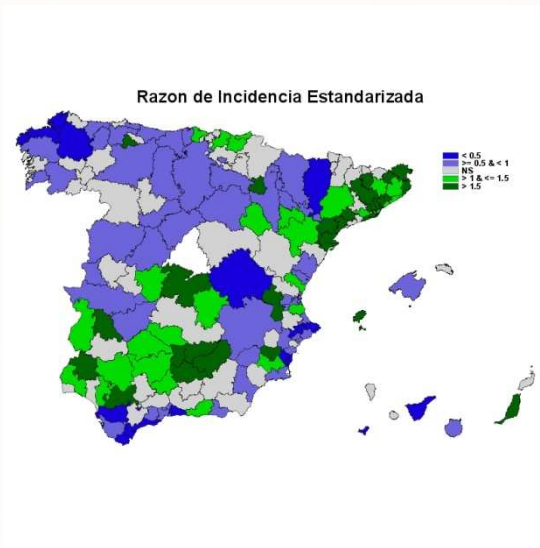
0,24 0,19 0,17 0,24 0,16

Hospitalizaciones en complicaciones agudas de la diabetes



RV 5-95	10,9	8,49	11,68	13,76	12,09
EB	0,32	0,36	0,3	0,37	0,3

Artroplastia de rodilla



RV 5-95

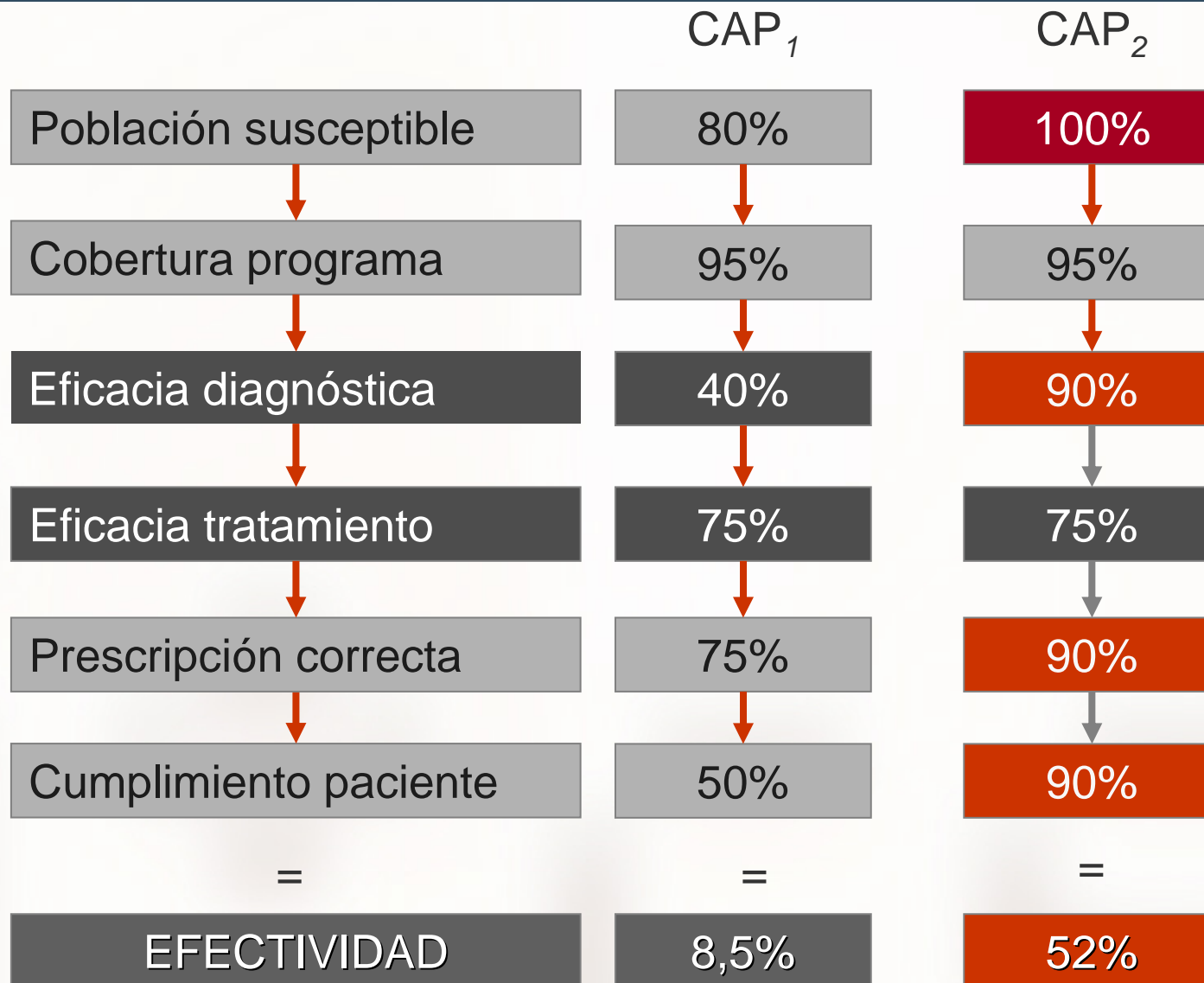
7,13 6,37 5,25 6,31 5,05

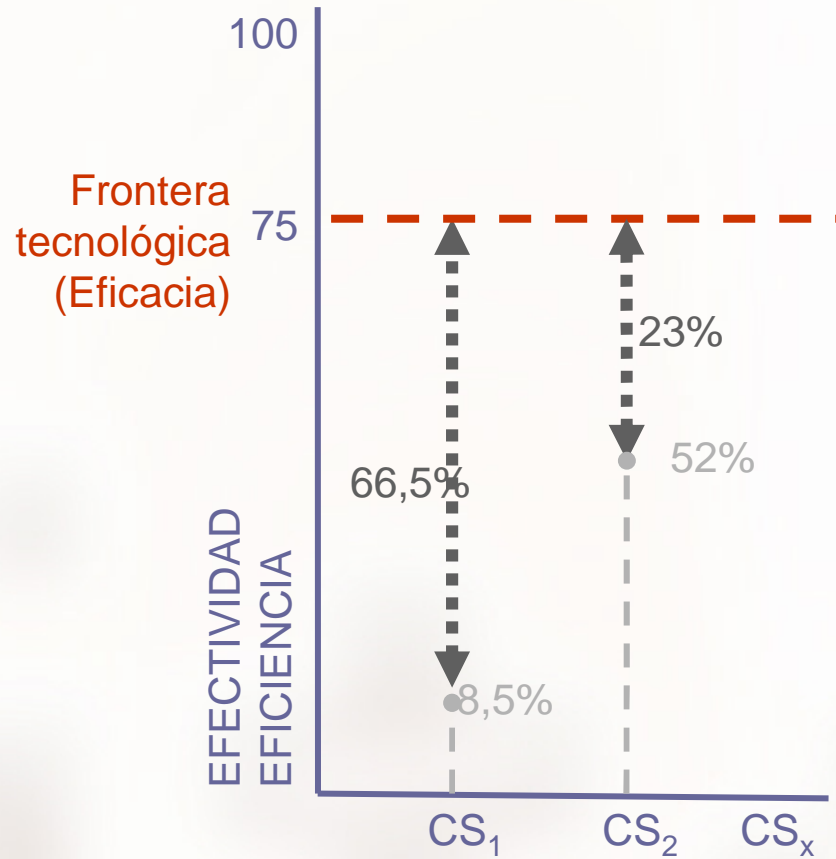
CSV

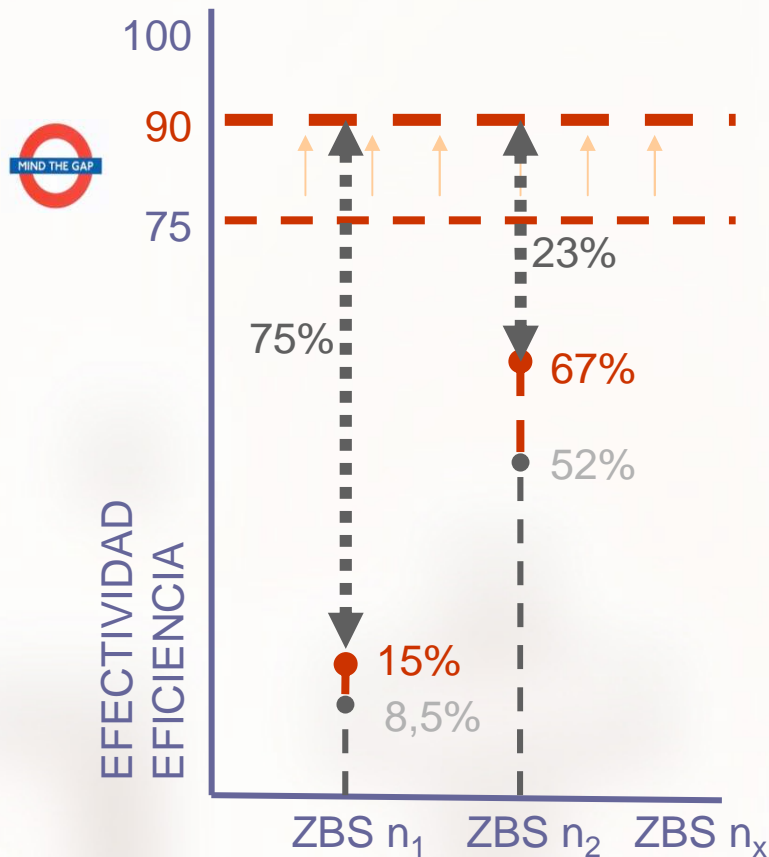
0,3 0,32 0,29 0,27 0,23

La clave del coste-efectividad está en la efectividad

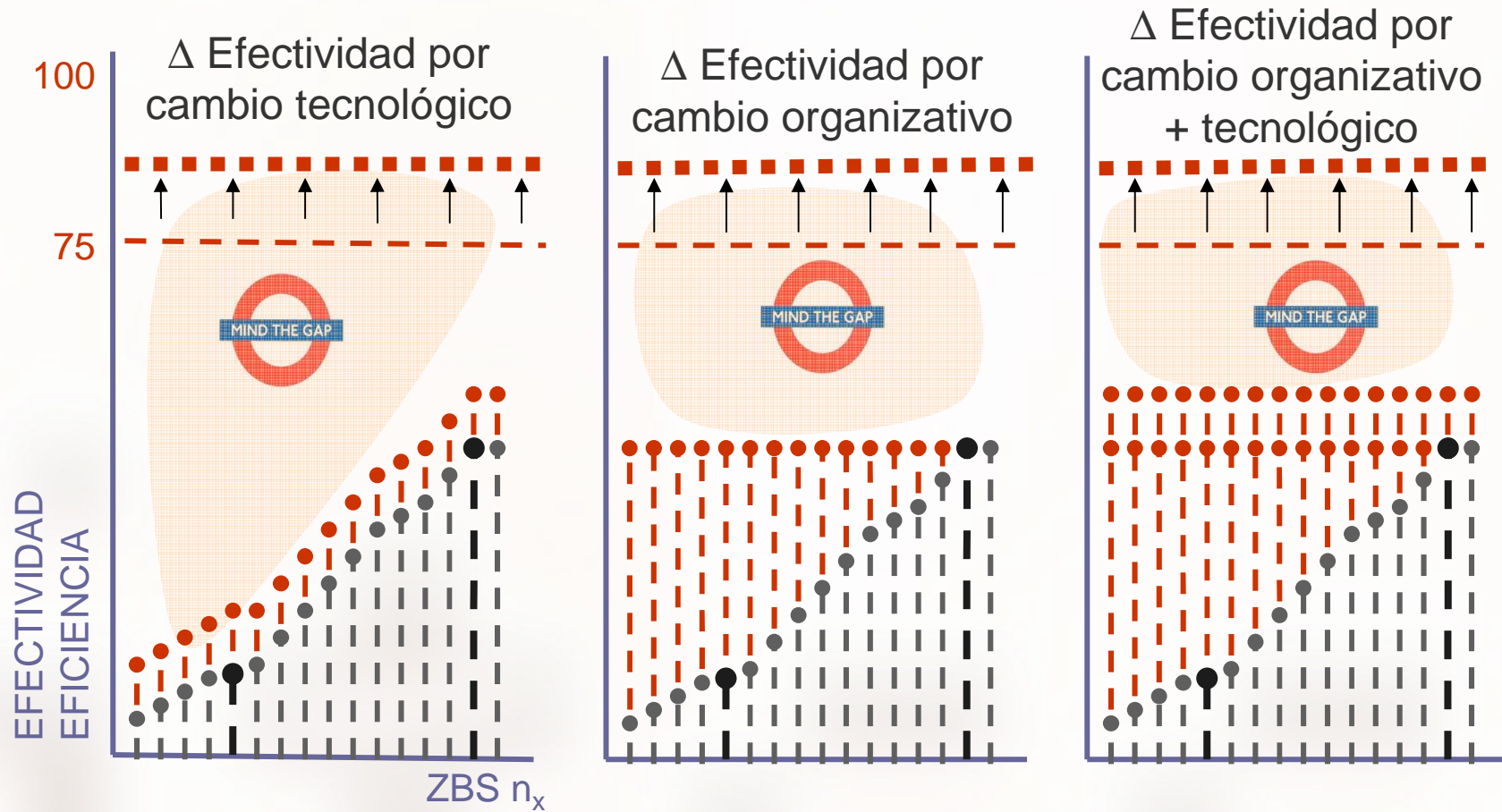








La verdadera innovación desplaza el límite de la frontera de eficacia...incrementando la brecha si todo sigue igual



Enseñanzas para la sostenibilidad del sistema

1. En la utilización de muchas tecnologías, especialmente aquéllas para las que existe poca certidumbre sobre su efectividad, el **coste marginal supera al valor (beneficio) marginal**.
2. Alejarse de la frontera de desempeño, implica **desperdiciar recursos, incrementa el coste de oportunidad y cuestiona la credibilidad** del sistema

Gracias!

